

# HOUSE & LAND

Sanctuary  
RANGE

\$10,000 OUTDOORS DOMAIN GIFT CARD!



JAMIESON 250

**\$763,000\***



4 2 2

TOTAL (sqgs)	26.87
TOTAL (m <sup>2</sup> )	249.6
WIDTH (m)	14.99
LENGTH (m)	19.79

**LOT 171 SIENNA BLVD, ASHFIELD QLD**

LAND: 728m<sup>2</sup> ESTATE: BELLE EDEN ESTATE

### Features & Inclusions:

Exposed aggregate driveway allowance

Facade Included

Local builder/Local trades

Moments to the CBD

Sanctuary Inclusions

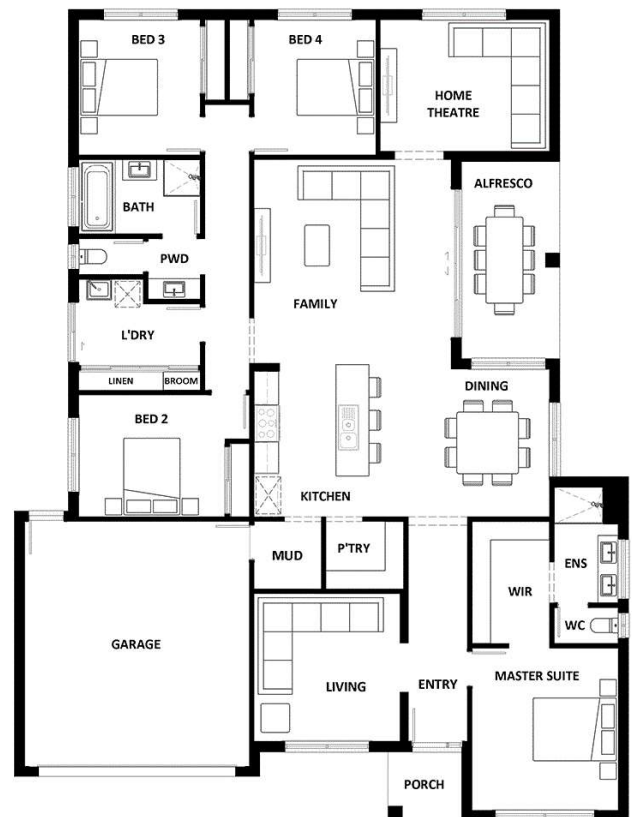
900mm Stainless Steel Appliances

Vinyl planks, carpet and tiles throughout

For more information contact:

**Amy Plowman 07 4155 5031**

Builder Licence: QBCC 1207648



\*Dimensions, photographs, floor plans and facade images are approximate and for illustrative purposes only. They are not drawn to scale. The dimensions provided of "width" and "length" are the actual dimensions of the completed house including alfresco areas (where applicable). It is the home owner's responsibility to ensure that all applicable council regulations and estate requirements are met. Subject to land availability, pricing and site costs unless advertised as a 'fixed price package'. Driveway size based on builder's preferred siting. Check with your local builder for builder's standard range and inclusions. Photographs may include optional features or items that are not supplied by Hotondo Homes. Hotondo Homes reserves the right to change plans, specifications, materials and suppliers without notice. For more information visit your local builder or hotondo.com.au.

**Hotondo  
Homes**